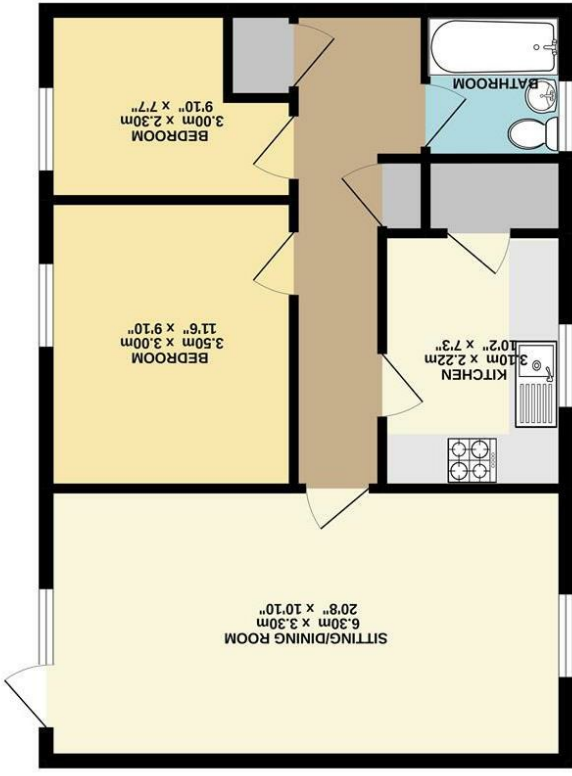


While every attempt has been made to ensure the accuracy of the floorplan contained herein, measurements of doors, windows, doors and other features are approximate and no responsibility is taken for any error of omission or commission. This plan is for illustrative purposes only and should be used as such by any prospective purchaser. The vendor, agents and applicants accept no liability for any errors or omissions. Measurements are to the internal face of walls and are not intended to be used as a guide to the area of the property. Measurements are to the internal face of walls and are not intended to be used as a guide to the area of the property. Measurements are to the internal face of walls and are not intended to be used as a guide to the area of the property. Measurements are to the internal face of walls and are not intended to be used as a guide to the area of the property.



GROUND FLOOR
57.4 sq. m. (617 sq. ft.) approx.

England & Wales		EU Directive 2002/91/EC	
Very energy efficient - lower running costs	A (92 plus)	Not energy efficient - higher running costs	G (1-20)
	B (81-91)		F (21-30)
	C (69-80)		E (39-54)
	D (55-68)		D (55-68)
	E (39-54)		C (69-80)
	F (21-30)		B (81-91)
	G (1-20)		A (92 plus)
Potential	Current		

Disclaimer - In accordance with the Property Misdescriptions Act, the company gives notice that all descriptions, references to condition, necessary permissions for use and other details are given in good faith and believed to be correct, but any intending lessees do not rely on them as statements of fact, but must satisfy themselves by inspection or other means, as to their accuracy.



Norfolk Property
online.

Blackthorn Close | Norwich | NR6
Guide price £175,000

Norfolk Property online presents this spacious, ground floor apartment. Having been well maintained and improved by the current owners, this generous property is an ideal opportunity for any first time buyer or buy-to-let investor. Accommodation comprises; entrance hall, bathroom, two bedrooms, kitchen and generous lounge diner, which opens onto the private, enclosed garden. With the garden also offering access to the communal lawns, this home also benefits from a secure store and parking space. An internal viewing comes highly recommended.

